

### **jetStamp 990**

• Ideal for small areas • Also prints on curved surfaces • User friendly • Starting model • Quick imprint • Max. print size: 2 lines, each 42 x 3,2 mm (W x H)



### **THE SMALL AND FAST ONE**

The REINER *jetStamp* 990 is characterised by **rapid speed** and particularly **handy use** thanks to its compact size.

The smallest device from the *jetStamp* family permits **quick** and **simple markings** on **any smooth or irregular surface**. Like its bigger siblings, the inkjet printer is characterised by **optimal integration options**: it can be used mobile at the **respective workplace integrated into the production**.

The integrated LC display shows the set print image easily legible at all times in order to prevent marking errors.

The robust *jetStamp* 990 offers perfect flexibility with its **memory options**. Up to **25 customised texts** or special functions can be stored in the device. Five of these slots are filled with pre-set example images at delivery.

- Ideal for small areas
- Also prints on curved surfaces
- User friendly
- Starting model
- Quick imprint

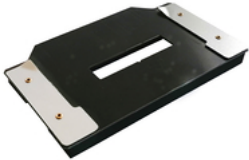
## jetStamp 990 - Technical Data

Imprint:	Number, date, time, text
Prints from:	PCset
Display:	Display available
Dimensions (L x W x H):	100 x 80 x 160 mm
Dimensions base station (L x W x H):	115 x 145 x 35 mm
Weight:	Approx. 500 g
Character font:	2 lines
Data transfer:	USB, Bluetooth
Storable print images:	25 storable print images
Print technology:	Inkjet
Max. print area dimension (W x H):	42 x 3,2 mm
Max. print speed:	< 1 s/imprint
Print resolution:	96 dpi
Battery capacity:	up to 1.000 prints
Order No.	990 000-000   jetStamp 990 incl. case
Printer Cartridges:	<a href="#">Please select desired print cartridge separately here</a>

Order No.	Sample Prints	Figure size
990 000-000	CHARGE: 000002 01.02.25 15:50	3.2 mm
990 000-000	PAYE 01.AVR 2029	3.2 mm
990 000-000	12345678 30.APR 2029	3.2 mm
990 000-000	EING. 12345678 13.MRZ 2012 09:39	3.2 mm
990 000-000	LOT. A475839.875B EXP.DATE: 2029-08	3.2 mm

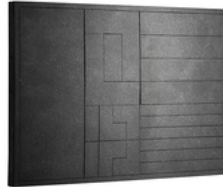
## *jetStamp 990* - Accessories

**Indicator of printing position 990 Slide-in**  
Positioning aid for curved and sensitive surfaces



Order-No.: 794 030-100

**Indicator of print position**  
for consistent imprints on small or curved objects



Order-No.: 1037 210-000

**Automatic printing station**  
Marking documents simply, quickly, and consistently



Order-No.: 796 205-100

**Swivel arm *jetStamp***  
Individually adjustable holding arm for the ideal printing position



Order-No.: 1037 270-000

*jetStamp 990* - Accessories

**Accu AA**

High-performance. Very durable. Long-lived.



Order-No.: 946 192-100

**Pedal-Switch**

External printing trigger by foot or hand



Order-No.: 381 050-005

**Suitcase jetSafe BASIC**

for secure transport and storage of handheld  
inkjet printers



Order-No.: 1037 010-100

*jetStamp 990* - Printer cartridges

**Ink cartridge  
P1-EF-RD  
for egg marking**



Adheres to: Eggshell (food safe)

Order-No.: 791 050-101

**Ink cartridge  
P1-EF-AUB  
for egg marking**



Adheres to: Eggshell (food safe)

Order-No.: 791 050-100

**Ink cartridge  
P1-S-BK  
for absorbent surfaces**



Adheres to: Paper, cardboard, wood,  
stone/brick

Order-No.: 801 307-000

**Ink cartridge  
P1-MP3-BK  
for non-absorbent surfaces**



Adheres to: Paper, cardboard, wood,  
stone/brick, metal, plastic

Order-No.: 791 060-020

**jetStamp 990 - Printer cartridges**

**Ink cartridge**  
**P1-MP4-BK**  
for non-absorbent surfaces



Adheres to: Paper, cardboard, wood,  
stone/brick, metal, plastic,  
glass

---

Order-No.: 791 060-030

---

**Ink cartridge**  
**P1-MP6-YE**  
for non-absorbent surfaces



Adheres to: Paper, cardboard, wood,  
stone/brick, metal, plastic,  
glass

---

Order-No.: 791 060-040

---